

scene

presenting

bedroom farce

the crucible

gabriel

great expectations

the pillowman

the gin game

SLEEPING BEAUTY ♦ SHOCKHEADED PETER
PICASSO'S WOMEN ♦ MAY QUEEN ♦ STOVEPIPE
HANDSWORTH GANG SHOW ♦ STREET SCENE
LOVE, SAX & ALL THAT JAZZ 2 ♦ ROAD ♦ SWEET CHARITY

and featuring

THE REP 
Birmingham Repertory Theatre



brindleyplace

crescent welcome



Andrew Lowrie Chairman

Welcome to 2012 and a new issue of **SCENE**, which is once again packed with an exciting variety of shows from our resident company and the many visiting theatre groups who also call the Crescent home.

You can make yourself feel right at home by visiting the theatre's new coffee shop! Open during the daytime – with a fine array of drinks and snacks on offer, as well as free wi-fi – it's a great place to take the weight off your feet and catch up on some gossip!

From the hilarious comedy of **Bedroom Farce** to the tenderness of **The Gin Game**, over the next few months the Crescent will bring the wide world of theatre right to your doorstep – in an affordable and accessible way. Plus, coming soon is the Broadway Musical **Grand Hotel** which has won a host of Tony Awards.

And if you like what you see – which I'm sure you will! – don't forget that you too can join us and take to the stage! Simply contact the theatre, visit our website or join us on Facebook to find out more. Who knows, maybe you will feature as the star on the cover of our next brochure...!



15% off

Ticket-holders can now enjoy 15% off at The Slug and Lettuce in Brindleyplace!

Terms and conditions apply.

the crescent spaces

The Crescent is flexible and affordable, easily accessible and welcoming. From meeting rooms to the two auditoria, the theatre offers plenty of space at competitive prices for all your corporate hire needs.



Enjoy a Pre-Show two course meal at the Mint Hotel City Café when seeing a performance at the Crescent Theatre for just **£10.95!** Simply add the price of your meal to your theatre ticket.

car park

Obtain your ticket from the car park and get it stamped in the theatre – **£4.50 for up to 6 hours.**

Car park prices correct at Dec 2011.
A space in the car park is not guaranteed.

Cover photograph by

Graeme Braidwood
Photography

how to book

By Post Please enclose a cheque (made payable to The Crescent Theatre Limited) or credit card details together with a SAE or add 50p to the total to cover postage. Please send to...

The Box Office
The Crescent Theatre
Sheepcote Street
Brindleyplace
Birmingham
B16 8AE

By Telephone For reservations and credit card bookings please call...

0121 643 5858

12 noon - 7.00pm **Mon-Fri**
12 noon - 4.00pm, 4.30pm - 7.00pm **Sat**

Bookings can be made **online...**

www.crescent-theatre.co.uk

In Person Box Office opens...

12 noon - 8.00pm **Mon-Fri**
12 noon - 4.00pm, 4.30pm - 7.00pm **Sat**
When there is no performance the Box Office will close at 7.00pm. **Sunday Performances** Box Office opens one hour prior to the performance to personal callers. **Bank Holidays** On performance days only 12 noon - 8.00pm.

Crescent Theatre Company Main House

All Seats £14 (Concessions £13)
Groups of 20 or more @ £12

Ron Barber Studio Theatre

All Seats £10 (no concessions)
Group discounts available to schools.

Concessions are available to Children, Senior Citizens, Students, and the Unwaged. If you have a disability and you require a companion when attending a performance, both your seat and that of your companion will be half price.

For **Visiting Companies'** ticket details and concessions (where not advertised) please see under individual listing or phone the Box Office.

crescent

21 - 28 Jan 2012

bedroom farce

by Alan Ayckbourn

Take a break from panto season and join the grown-ups for Ayckbourn's hilarious look at the romantic lives of three married couples as they move in and out of each others' bedrooms over the course of 24 hours.

While the laughter rarely ceases, as always with Ayckbourn, it's his awareness of the painful truth that's behind the humour that makes him our most prolific and successful contemporary playwright.

"Ayckbourn's hilarious bleak view of middle-class marriage". *The Guardian*.



MAIN HOUSE £14 (£13), Groups 20+ @ £12
£7 Matinée Sun 22
After Dark Fri 27

crescent

25 Feb - 3 Mar

the crucible

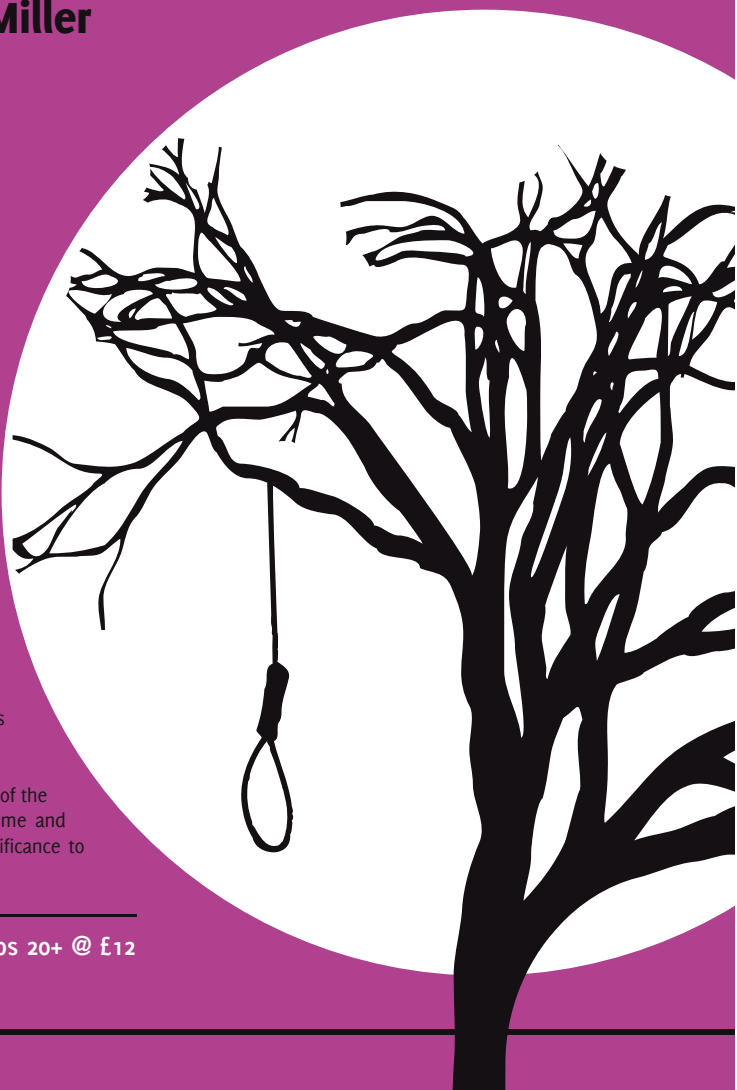
by **Arthur Miller**

Arthur Miller's terrifying exploration of injustice is set against the background of the Salem witch trials of 1692.

Mischief by a group of young girls spirals totally out of control, sweeping an entire society up in a madness that threatens to destroy all in its path. The play focuses on the tragedy of John and Elizabeth Proctor, unable and unwilling to sacrifice that which they know to be right to the insanity that surrounds them.

Unquestionably one of the finest plays of the Twentieth Century, it must be seen time and again to appreciate its continued significance to all of us today.

MAIN HOUSE £14 (£13), Groups 20+ @ £12
£7 Matinée Sun 26 Feb
After Dark Fri 2 Mar



crescent

Birmingham Première! 3 - 10 Mar

gabriel

by **Moira Buffini**

Gabriel explores the impact of that occupation upon three generations of women on Nazi-occupied Guernsey, left behind by the men who have gone to war.

A young man is swept ashore with no memory of who he is, but able to speak fluently both German and English – and the unhappy relationship between islanders and Nazis is dangerously blown apart. Moira Buffini has long had a good relationship with Birmingham theatre audiences – but this is the first time that this play has been performed here.

STUDIO

£10

After Dark

Fri 9

By arrangement with United Agents.

THE
CRESCENT
YOUTH
THEATRE
PRESENTS

great expectations

22 - 24 Mar

by **Charles Dickens**

Great Expectations is the story of Pip, an orphan adopted by a blacksmith's family, who suddenly finds wealth, a secret benefactor, and for the first time great expectations for the future.

Through his changing fortunes Pip learns the hard way how to find happiness, and to value the important things of life. With a cast of brilliant Dickensian characters such as

the vain and cold Estella, the desperate convict Magwitch, and the bitter spurned bride Miss Havesham, the Crescent Youth Theatre are proud to tell one of Dickens' most loved and most performed tales in the English Language.

STUDIO

£10

After Dark

Fri 23

crescent

31 Mar - 7 Apr

the pillowman



by **Martin McDonagh**

As if in some terrifying police state, an author is interrogated about the similarity between a spate of recent child murders and his own grisly fiction.

As the story of his disturbed childhood unfolds, the fine line between truth and fiction and between artistic value and depravity become blurred. An important play – frightening, bleak and very, very beautiful.

STUDIO
£5 Matinée
After Dark

£10
Sun 1 Apr
Fri 6 Apr

By arrangement with Samuel French Ltd.

the gin game

Birmingham Première! 14 - 21 Apr

by **D.L. Coburn**

Crotchety and lonely, Weller waits for death in a small home for the elderly, with only his playing cards for company. Enter Fonsia.

Not quite a breath of fresh air, but certainly new and with no knowledge of either Weller or Gin Rummy. At first, he is delighted to teach her – but then he loses the first game. The Pulitzer Prize winning play comes to Birmingham for the first time.

STUDIO
£5 Matinée
After Dark

£10
Sun 15
Fri 20



By arrangement with Samuel French Ltd.

1 - 4 Feb



May Queen

by Stephen Sharkey

Death falls from the sky and rises from old graves in war-torn Liverpool, as a son and daughter seek to avenge their murdered father. And then Hitler prepares to invade...

This production contains scenes of a violent nature and may not be suitable for under 14 year olds.

MAIN HOUSE £7 (£5, £2.50 Students)

8 - 11 Feb

A Family Affair

by Alexander Ostrovsky.
Adapted by Nick Dear.

The Russian government censor's report said "All The characters are first class villains. The dialogue is filthy. The entire play is an insult to the Russian Merchant class." There can be no better publicity for this 'scabrous and irreverent satire'.

A farcical comedy of loose morals and lost manners exposing a mercantile society in which a family ends up avariciously preying upon each other, while regarding blood ties as worthless knots easily undone.

MAIN HOUSE £7 (£5, £2.50 Students)



1 - 4 Feb

HEDDA GABLER

by Henrik Ibsen. New Version by Richard Eyre.

Arriving home after an extended honeymoon, Hedda struggles with an existence that is, for her, devoid of excitement and enchantment. Filled with passion for life that cannot be confined by her marriage, Hedda strives to find a way to fulfil her desires by manipulating those around her...

STUDIO
£7 (£5, £2.50 Students)

8 - 11 Feb

STOVEPIPE

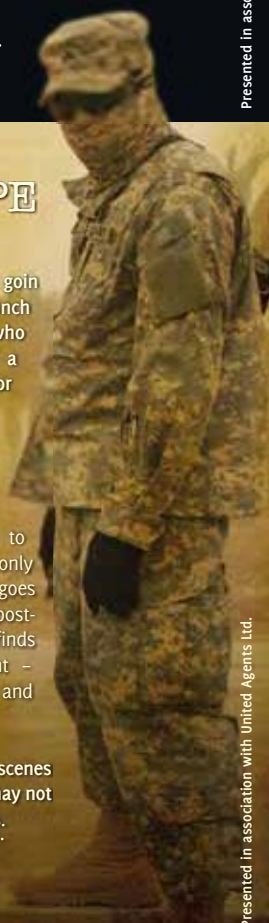
by Adam Brace

I went cos it's better goin for money than for a bunch of ungrateful swine who think, once you're in a body bag, you asked for it by joining up.

Whether a soldier's fighting for a country or a corporation, he's really just fighting to stay alive. When his only surviving comrade goes missing en-route to post-war Iraq, a mercenary finds a new reason to fight - salvation for his friend, and maybe for himself.

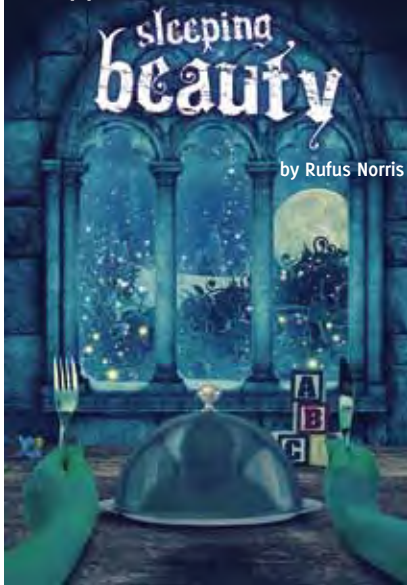
This production contains scenes of a violent nature and may not be suitable for under 14s.

STUDIO
£7 (£5, £2.50 Students)



3 - 14 Jan 1012

The Rep presents



by Rufus Norris

The Rep presents a fun and refreshingly quirky Christmas treat for everyone to enjoy – Rufus Norris’ fantastical take on *Sleeping Beauty*.

This version of *Sleeping Beauty* is told from the point of view of the mischievous old Fairy Goody, a grubby, smelly old sprite who casts a spell that sends Princess Beauty into a deep, deep sleep. Will *Sleeping Beauty* awaken from her spell with a kiss from the dashing and handsome Prince? And will they all live happily ever after?

However, there’s trouble in the form of *Sleeping Beauty*’s new mother-in-law, a fearsome man-eating Ogress, who is after Beauty’s babies, Goody’s wings falling off because of her bad deed and all the fairytale creatures have to put up with some interesting side effects from the force of her magic that results in some rather smelly spells!

This weirdly wonderful, musical adaptation of *Sleeping Beauty* has laughs aplenty and enough grisly and gruesome characters to keep all of the family entertained. Expect fairytale romance, hideous ogres, sinister spells and a magical Christmas show like no other!

MAIN HOUSE £9 - £28

Audio Description and Captioned Performances available.

11 - 14 Jan

Stagez presents

SHOCKHEADED PETER

by Heinrich Hoffman

This show is inspired by the 1844 *Struwwelpeter* stories of Heinrich Hoffman, a German doctor wanting a better class of children’s book for his three-year-old son. Pity the poor son, who must have been reduced to a quivering mass hiding beneath the bedsheets!

STUDIO £9

17 - 21 Jan

Stagez presents

PICASSO’S WOMEN

by Brian McAvera

Eight ‘monologues’ – four presented each night – in which the most dominant women in Picasso’s life, used and often abused by the great artist, tell their own life stories aided by a friend, a child, a mother, a lover...

Picasso claimed women were either goddesses or doormats. He could be charming, fascinating, generous and kind, but all too often was ruthless, calculating, manipulative and vicious. He attracted women and immortalised them on canvas and in his sculpture – and he broke most of them on a rack, which was partially of their own making.

“Picasso loathes any public divulgence of his private views” observed Françoise Gilot who published *Life with Picasso*, adapted by the film *Surviving Picasso*.

Stagez revive their acclaimed production from 2000 by popular demand.

STUDIO £9

Not suitable for young children.



13 - 18 Feb

Tame Valley District Scout Association and
Perry Barr Guide Division present the

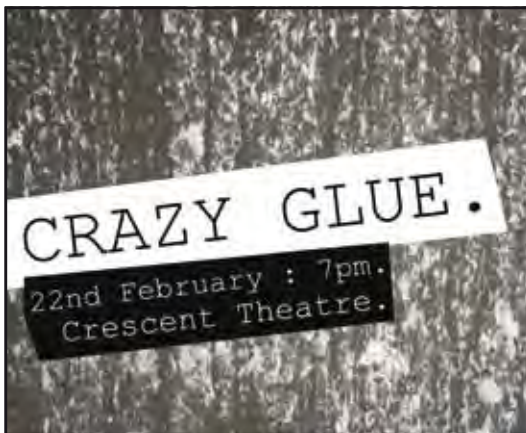
2012 HANDSWORTH GANG SHOW



The Handsworth Gang Show is a fast moving family show performed by Scouts and Guides from the North West districts of Birmingham.

Established in 1953 they have performed bi-annually since then at City Centre theatres. Well rehearsed song and dance routines will entertain all ages and have made this show one of the top Gang Shows in the country – and good value for all the family in Half Term week.

.....
MAIN HOUSE £10 (E6)



A contemporary music theatre work based on the short story by Etgar Keret. Composed and directed by Luke-Matthew Iveson.

.....
STUDIO £8 (E6)

8 - 10 Mar The Birmingham Conservatoire presents

STREET SCENE

Music by Kurt Weill. Lyrics by Langston Hughes.
Based on the Pulitzer Prize-winning play by Elmer Rice.

This 'American opera' is the story of a group of families living in a New York brownstone during a summer heatwave in 1947 and charts their love, laughter and loss.

With soaring melody and New York rhythms at the heart of the piece, the score has been likened to Puccini meets Jazz. Using the full forces of the Conservatoire's Vocal and Orchestral departments, this promises to be a momentous revival of an incredible work.

.....
MAIN HOUSE £15 (E12)





13 - 17 Mar
Midland Theatre Ballet presents

SLEEPING BEAUTY

Midland Theatre Ballet is a youth ballet for talented dancers between 8 - 18 yrs. Children audition for places for a years course of classes and rehearsals culminating in this year's performance of **Sleeping Beauty**. Taught by professional dancers Lei Zhao, Rachel Hester and Olivia Pickford.

MAIN HOUSE £tba

30 + 31 Mar
The Arcadians present

Oh What a Night!

AND OTHER TOP SONGS FROM FAVOURITE MUSICALS

Get ready for a great night of entertainment at the Crescent Theatre.

The Arcadians will take you on a journey from **Finian's Rainbow** (their first production 40 years ago), through the magical world of Disney and the classic songs of **Singin' in the Rain**, to the more contemporary sounds of **Jersey Boys** and **We Will Rock You**, before heading back over the rainbow to the land of Oz for **Wicked**.

As well as the title song **Oh What a Night!**, this spectacular will feature hit songs including **Singing in the Rain**, **Somebody to Love**, **Feed the Birds**, **Big Girls Don't Cry** and **Defying Gravity**. With something for everyone, you are guaranteed to leave the theatre singing!

MAIN HOUSE £10

12 + 13 Apr
Parlon Film Company present by Rick Limentani

FREEDOM



When Tajik farmer Benham tells a daring lie to protect his farmlands from druglords, he is forced to invent a wild scheme to prove his untruth, sending his son, Fariad, to England.

Once there though, Fariad develops a friendship with an emotionally damaged girl, Jennifer, who interferes with Benham's carefully, laid plans. Each of the three must choose between their own and each other's freedom in this powerful story of seduction, greed and betrayal.

MAIN HOUSE £14 (£12 Concessions)

Love Sax and all that Jazz

DA MANS DEM

THE SEQUEL

Written by Alan Charles



Love Sax and all that Jazz Chapter 2 (Da Mans Dem) is the sequel to the hit comedy play Love, Sax and all that Jazz. Written by Alan Charles, Da Mans Dem takes an informative and humorous look at men and relationships, exploring those age old questions – What do men want? Why do men cheat? And what defines a man? In Chapter One the girls were explosive. In chapter Two Da Mans Dem will get their say. Get ready for another explosion of humour in this production that will inform, uplift and *edutain* the whole family.

MAIN HOUSE £15 advance, £17.50 on the door

18 - 21 Apr
Stagez presents

ROAD

by Jim Cartwright

“Beneath the gags, the playwright’s rumbling sense of lost dignity resulting from unemployment and chauvinism, gives this stunning debut a perceptive and frightening reality.” *City Limits*.

First staged at the Royal Court in 1986, Road tells of one wild night in a derelict northern street. Sharp and comic scenes jostle viciously to expose a population driven mad by despair. With recent riots and Government cuts, this will be a timely revival – we will examine ‘community neglect’ and individuals’ loneliness and how we can actively contribute to happiness and security within our own neighbourhoods.

MAIN HOUSE £9

25 - 28 Apr
Bournville Musical Theatre Society presents

SWEET CHARITY

Book by Neil Simon. Music by Cy Colman.
Lyrics by Dorothy Fields.

Taxi dancer *Charity* continues to have *Faith* in the human race despite apparently endless disappointments at its hands, and *Hope* that she will finally meet the nice young man to romance her away from her sleazy life.

Maybe, just maybe, handsome Oscar will be the one to do it...



MAIN HOUSE £12 - £14

performance diary

J A N U A R Y 2 0 1 2				
Tue	3	The Rep	SLEEPING BEAUTY	7.30 M
Wed	4	The Rep	SLEEPING BEAUTY Schools	10.15 + 2.30 M
Thu	5	The Rep	SLEEPING BEAUTY Schools	10.15 + 2.30 M
Fri	6	The Rep	SLEEPING BEAUTY [Schools 2.30]	2.30 + 7.30 M
Sat	7	The Rep	SLEEPING BEAUTY Touch Tour 1.00	2.30 + 7.30 M
Sun	8	The Rep	SLEEPING BEAUTY	2.30 M
Tue	10	The Rep	SLEEPING BEAUTY Schools, Touch Tour 9.30	10.15 + 2.30 M
Wed	11	The Rep	SLEEPING BEAUTY Schools	10.15 + 2.30 M
		Stage2	SHOCKHEADED PETER	7.45 S
Thu	12	The Rep	SLEEPING BEAUTY Schools	10.15 + 2.30 M
		Stage2	SHOCKHEADED PETER	7.45 S
Fri	13	The Rep	SLEEPING BEAUTY [Schools 2.30]	2.30 + 7.30 M
		Stage2	SHOCKHEADED PETER	7.45 S
Sat	14	The Rep	SLEEPING BEAUTY	2.30 + 7.30 M
		Stage2	SHOCKHEADED PETER	2.00 + 7.45 S
Tue	17	Stage2	PICASSO'S WOMEN 1904 - 1927	7.45 S
Wed	18	Stage2	PICASSO'S WOMEN 1927 - 1973	7.45 S
Thu	19	Stage2	PICASSO'S WOMEN 1904 - 1927	7.45 S
Fri	20	Stage2	PICASSO'S WOMEN 1927 - 1973	7.45 S
Sat	21	Stage2	PICASSO'S WOMEN 1927 - 1973	2.00 S
			BEDROOM FARCE	7.30 M
		Stage2	PICASSO'S WOMEN 1904 - 1927	7.45 S
Sun	22		BEDROOM FARCE [E7 Preview]	2.30 M
Tue	24		BEDROOM FARCE	7.30 M
Wed	25		BEDROOM FARCE	7.30 M
Thu	26		BEDROOM FARCE	7.30 M
Fri	27		BEDROOM FARCE [After Dark]	7.30 M
Sat	28		BEDROOM FARCE	2.30 + 7.30 M
F E B R U A R Y				
Wed	1	BSA	MAY QUEEN	7.30 M
		BSA	HEDDA GABLER	7.45 S
Thu	2	BSA	MAY QUEEN	7.30 M
		BSA	HEDDA GABLER	2.45 + 7.45 S
Fri	3	BSA	MAY QUEEN	2.30 + 7.30 M
		BSA	HEDDA GABLER	7.45 S
Sat	4	BSA	MAY QUEEN	5.00 M
		BSA	HEDDA GABLER	5.30 S
Wed	8	BSA	A FAMILY AFFAIR	7.30 M
		BSA	STOVEPIPE	7.45 S
Thu	9	BSA	A FAMILY AFFAIR	7.30 M
		BSA	STOVEPIPE	2.45 + 7.45 S
Fri	10	BSA	A FAMILY AFFAIR	2.30 + 7.30 M
		BSA	STOVEPIPE	7.45 S
Sat	11	BSA	A FAMILY AFFAIR	5.00 M
		BSA	STOVEPIPE	5.30 S
Mon	13		HANDSWORTH GANG SHOW 2012	7.15 M
Tue	14		HANDSWORTH GANG SHOW 2012	7.15 M
Wed	15		HANDSWORTH GANG SHOW 2012	7.15 M
Thu	16		HANDSWORTH GANG SHOW 2012	7.15 M

Charges For all in-person, online and telephone tickets bought by cash, credit/debit card and cheque there will be a transaction charge equal to 5% of the ticket value. This is limited to a maximum equal to 5% of 9 tickets bought at one time for in-person & telephone purchases, but NOT online purchases. **Reservations** Tickets will only be held for 7 days. Reservations cannot be made for performances scheduled within 7 days. **Ticket Exchange** Tickets received at least 24 hours in advance may be exchanged for seats at another performance of the same production. However, we cannot guarantee this and the service is offered subject to ticket availability. **Please note** There is an administration charge of £1.00 per ticket exchanged. **Ticket Resale** The Crescent Theatre will endeavour to resell your tickets if necessary. However, we cannot guarantee this service and tickets will only be resold once no other ticket is available for that performance. There is an administrative charge of £1.00 per ticket. **Children** We regret that children under 18 months will not be admitted to shows other than Children/Pantomime shows. They must have a ticket whether they sit on the parent's/guardian's lap or not. We ask that you respect the enjoyment of other patrons and in the event of restlessness we request that you take the child from the auditorium. **All details contained in this brochure are correct at time of printing but could be subject to change. EROE.**

Fri	17		HANDSWORTH GANG SHOW 2012	7.15 M
Sat	18		HANDSWORTH GANG SHOW 2012	2.30 + 7.15 M
Wed	22		CRAZY GLUE	7.00 S
Sat	25		THE CRUCIBLE	7.30 M
Sun	26		THE CRUCIBLE [E7 Preview]	2.30 M
Tue	28		THE CRUCIBLE	7.30 M
Wed	29		THE CRUCIBLE	7.30 M
M A R C H				
Thu	1		THE CRUCIBLE	7.30 M
Fri	2		THE CRUCIBLE [After Dark]	7.30 M
Sat	3		THE CRUCIBLE	2.30 + 7.30 M
			GABRIEL	7.45 S
Sun	4		GABRIEL [E5 Preview]	2.45 S
Tue	6		GABRIEL	7.45 S
Wed	7		GABRIEL	7.45 S
Thu	8	Birmingham Conservatoire	STREET SCENE	7.30 M
			GABRIEL	7.45 S
Fri	9	Birmingham Conservatoire	STREET SCENE	7.30 M
			GABRIEL [After Dark]	7.45 S
Sat	10	Birmingham Conservatoire	STREET SCENE	2.30 + 7.30 M
			GABRIEL	2.45 + 7.45 S
Tue	13	Midland Ballet Theatre	SLEEPING BEAUTY	7.30 M
Wed	14	Midland Ballet Theatre	SLEEPING BEAUTY	7.30 M
Thu	15	Midland Ballet Theatre	SLEEPING BEAUTY	7.30 M
Fri	16	Midland Ballet Theatre	SLEEPING BEAUTY	7.30 M
Sat	17	Midland Ballet Theatre	SLEEPING BEAUTY	7.30 M
Thu	22		GREAT EXPECTATIONS	7.15 S
Fri	23		GREAT EXPECTATIONS [After Dark]	7.15 S
Sat	24		GREAT EXPECTATIONS	2.15 + 7.15 S
Fri	30	The Arcadians	OH WHAT A NIGHT	7.30 M
Sat	31	The Arcadians	OH WHAT A NIGHT	2.30 + 7.30 M
			THE PILLOWMAN	7.45 S

A P R I L				
Sun	1		THE PILLOWMAN [E5 Preview]	2.45 S
Tue	3		THE PILLOWMAN	7.45 S
Wed	4		THE PILLOWMAN	7.45 S
Thu	5		THE PILLOWMAN	7.45 S
Fri	6		THE PILLOWMAN [After Dark]	7.45 S
Sat	7		THE PILLOWMAN	2.45 + 7.45 S
		Focus Arts Promotions	LOVE, SAX & ALL THAT JAZZ 2	7.30 M
Sun	8	Focus Arts Promotions	LOVE, SAX & ALL THAT JAZZ 2	7.30 M
Thu	12		FREEDOM	7.30 M
Fri	13		FREEDOM	7.30 M
Sat	14		THE GIN GAME	7.45 S
Sun	15		THE GIN GAME [E5 Preview]	2.45 S
Tue	17		THE GIN GAME	7.45 S
Wed	18	Stage2	ROAD	7.30 M
			THE GIN GAME	7.45 S
Thu	19	Stage2	ROAD	7.30 M
			THE GIN GAME	7.45 S
Fri	20	Stage2	ROAD	7.30 M
			THE GIN GAME [After Dark]	7.45 S
Sat	21	Stage2	ROAD	7.30 M
			THE GIN GAME	2.45 + 7.45 S
Wed	25	Bournville Musical Theatre Society	SWEET CHARITY	7.30 M
Thu	26	Bournville Musical Theatre Society	SWEET CHARITY	7.30 M
Fri	27	Bournville Musical Theatre Society	SWEET CHARITY	7.30 M
Sat	28	Bournville Musical Theatre Society	SWEET CHARITY	2.30 + 7.30 M

KEY M Main House S Ron Barber Studio B Bar HH Highbury Hall
Audio Description Captioned Performance