

- Technical equipment available at additional cost is listed separately in the **Additional Charges**.
- Requirements should be discussed with the Technical Manager in advance of Get In.
- All information in this specification is subject to availability.

Arrivals & Access – Visiting Company Personnel

Personnel Access is via the main entrance foyer on Sheepcote street – where all visitors must sign in. The only permitted access for Personnel is via the Foyer.

Unloading/Get-in and Loading/Get-out

Access to the Ron Barber Studio is via the Foyer on Sheepcote Street. An alternate route is permissible via the Loading Bay and Main House Orchestra Pit Lift, which leads to the backstage of the Studio, but this must be with prior arrangement as the Main House may be in use by others.

SEATING

- Flexible, unfixed and lockable seating for all layouts (excluding Cabaret Style).
- Standard seating configuration is End On with raked seating in a minimum of 4 rows, maximum of 5. 3 Rows are on Rostra at 3 foot, 2 foot and 1 foot height. 1 Row on flat floor as standard. An additional row (also on flat floor) in front of standard rows.
- An additional selection of rosta and legs are available. Charges apply (see Additional Equipment).
- Bespoke configurations are possible upon request – see Layouts on next page.
- All seating configurations must leave 2 clear evacuation routes and be approved by the Technical Department.
- Seating must be returned to standard configuration upon get-out unless otherwise advised by the Technical Department.

Notes on the Layouts on next page;

Acting Area – For the purposes of these measurements, the ‘acting area’ extends up to the pillars; any available space beyond this has not been factored in.

Capacity – This is the maximum number of seats available for sale in each layout.

Wheelchair Users – We can accommodate a maximum of one wheelchair user per performance in the Studio. Two seats for a wheelchair user and accompanying carer will be held for sale exclusively through Box Office so that we can ensure appropriate provision is made. These seats are included in the capacity for each layout.

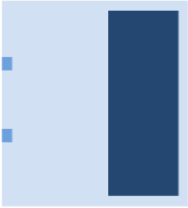

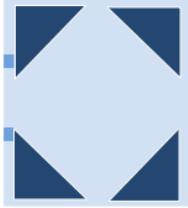
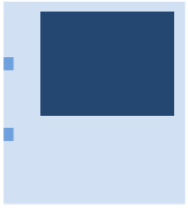


House Seats – Allowance has been made for two house seats in each layout, which are not counted as part of the overall capacity and will not be made available for sale for any performance.

Stewards – Two seats for stewards will be located in a suitable position, depending on layout (stewards may not have a clear view of the performance).

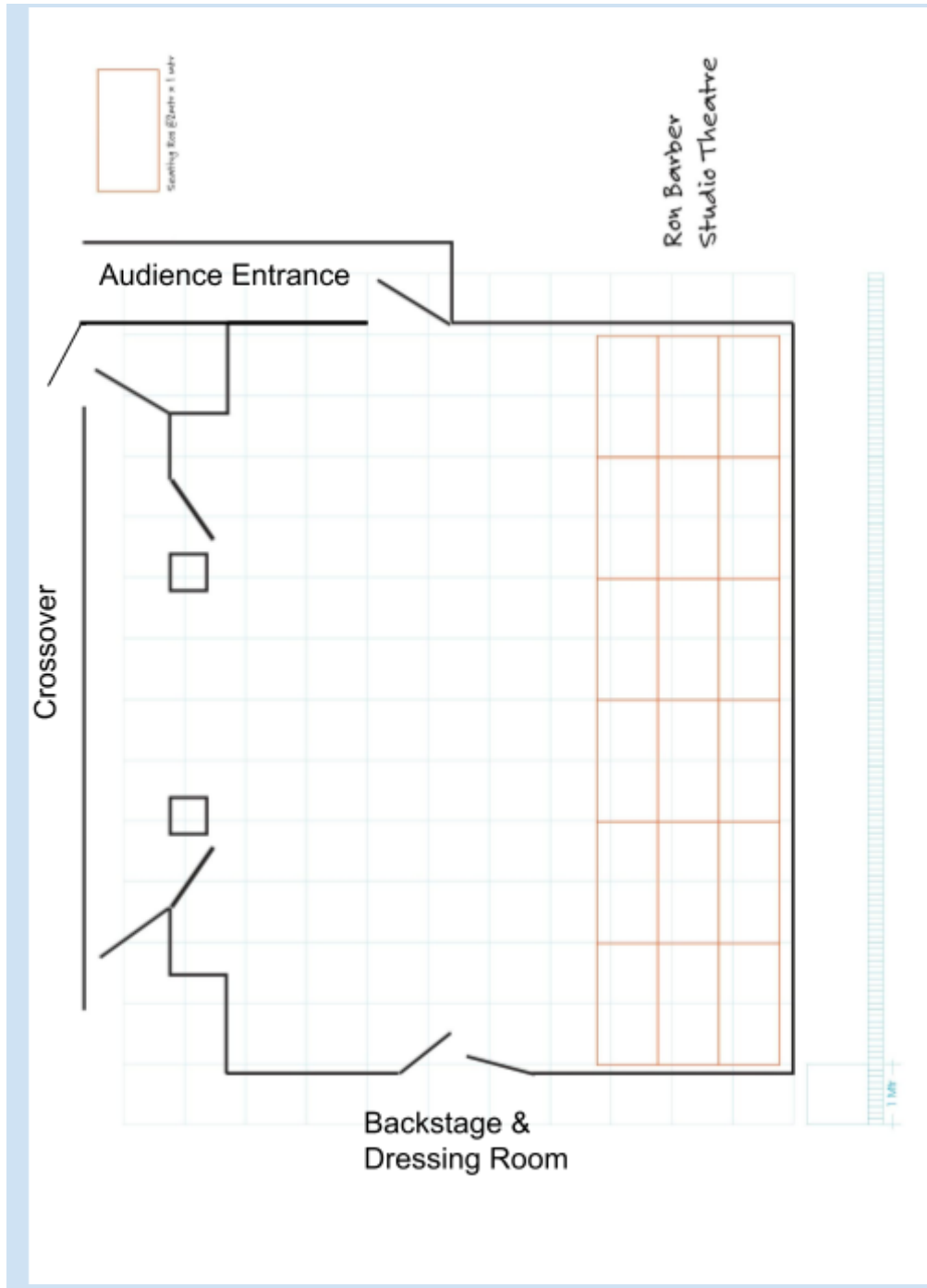
Seating Configurations & Capacities

Diagrams not to scale, overall dimensions approximately 12m x 9m.

Seating areas in dark blue. Pillars leading to alcove indicated by small blue dot squares on the right hand side of each graphic.

| End On (Standard) | Thrust | In the Round | Short End On |
|---|---|--|---|
|  |  |  |  |
| Capacity: 90/120 Acting area: 5m/3m x 12m | Capacity: 100 Acting Area: 5.5m x 5.5m | Capacity: 100 Acting Area: 6m x 6m | Capacity: 90 Acting Area: 5m x 9m |
| Avenue Longways | Avenue Shortways | Cabaret Style and Other Layouts | |
|  |  | <p>For any non standard configurations we will initially put a maximum 80 tickets on sale (not including stewards and house seats which will also need to be accommodated).</p> <p>It may be possible to increase this number once the final layout is agreed with the Technical Department.</p> | |
| Capacity: 106 Acting Area: 3.5m x 12m | Capacity: 98 Acting Area: 9m x 4.5m | Capacity and Acting Area are variable. | |

PLAN VIEW WITH STANDARD SEATING ROSTRA



PERFORMANCE SPACE

Style Of Venue: Black Box, multi-purpose

The Studio is a 12m x 9m (approx) "Black Box" style performance space with flexible options for performance space & seating arrangements. In our standard "End-On" seating layout, the Stage Right entrance is via double doors to backstage/dressing rooms. Stage Left entrance is via a single door which is also the Audience entrance. There is an alcove along one wall (upstage centre in the standard End-On Seating Layout), in between 2 pillars, with an upstage entrance either side of the pillars.

Studio Dimensions

| | <u>Width</u> | <u>Height/Drop</u> | <u>Depth</u> |
|--------------------|--------------|--------------------|--------------|
| Lighting Grid | Full Width | 6.5m/21.3ft | Full Depth |
| Overall Dimensions | 12m/39.4ft | 6.5m/21.3ft | 9m/29.5ft |

Masking

- Full width black curtains on rail across the alcove wall, of 3.6m drop
- A selection of masking flats are available on request, by prior arrangement

Technical Gallery & Communications

- Tech Gallery accessible from the Public Lift Lobby on Level 3.
- Tech Gallery spans three sides of Studio at level above performance space.
- 4 Headsets and belt packs available for use across the Studio.
- 4 cue lights available for use, operated from the prompt desk. List of positions available on request.
- Backstage calls to the dressing room and FoH calls to the studio operated from the prompt desk

Power

- 4 Facility Boxes in each corner of the performance space. 13a power outlets in each
- 13a power around the tech gallery and various locations throughout the venue.
- 1 x 32 a single phase on Tech Gallery, dedicated to LX Power

Backstage & Dressing Room

- Dedicated backstage area adjacent to Studio, through Stage Right double doors.
- Crossover corridor connects all entrances to the backstage area.
- x1 dressing room off the backstage area
- Separate Toilet and Separate Shower Room off Backstage area

Show Relay

- Show relay audio speakers permanently fitted in all dressing rooms and backstage corridors
- Conductor Cam available on request

LIGHTING

- Fixed Lighting Grid spanning entire space, measuring approx 9m x 9m overall
- 36 bays in grid (6x6 squares) each bay measuring approx 1.5 x 1.5m
- A SWL of 40kg per bay..
- Standard rig consists of Front Light and House Lights. It may be altered as necessary but must be returned by the end of get-out.
- Remaining lanterns on the grid can stay where they are but excessive cabling must be removed.
- Lighting plans to be submitted to the Technical Department no later than two weeks prior to get-in to guarantee stock levels.
- Limited additional stock of 15amp and DMX cable available on request.
- No gel or gobos are included within the hire, any requests should be made to the Technical Department for later recharge.
- Showline Varilite Fixtures are shared with the Main House - subject to availability.

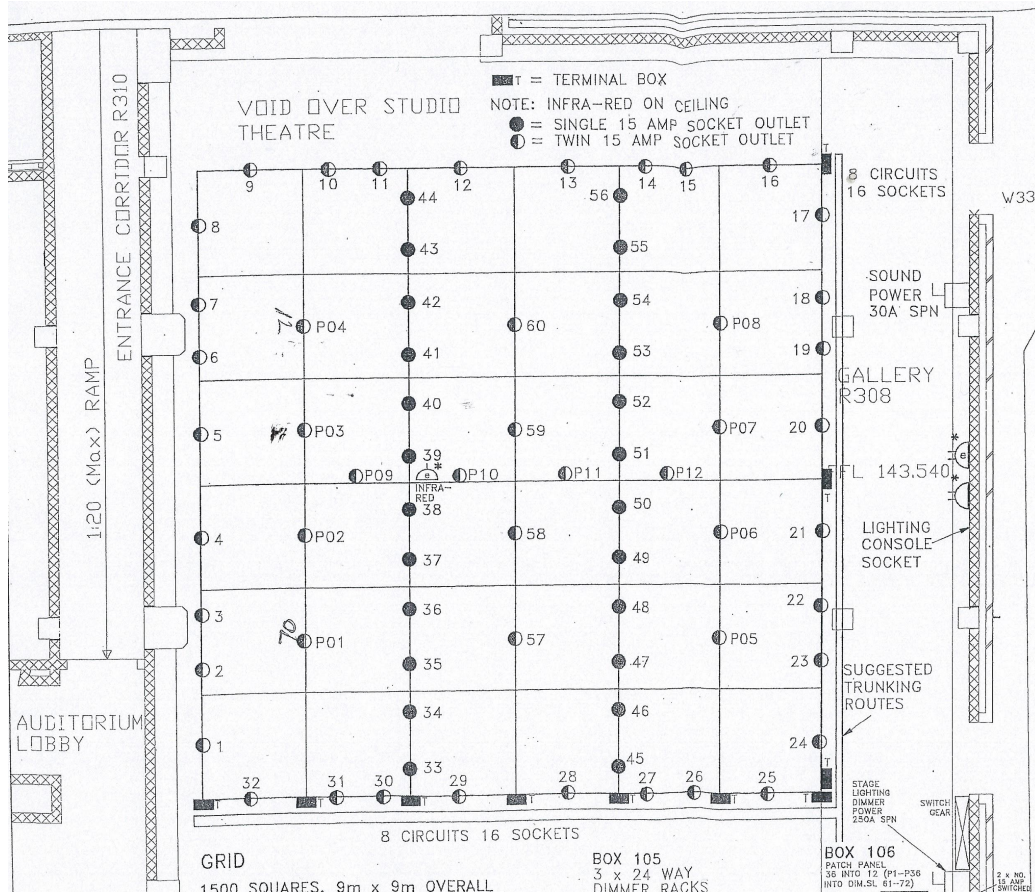
LANTERN STOCK

| Type | Make & Model | No. | Wattage/ Lumens |
|-----------------------------|--|-----|--------------------|
| Generic Fixtures | | | |
| PROFILE | Strand Cantata 26/44 | 6 | 1200W |
| | CCT Minuette | 8 | 650W |
| | ETC Source 4 Jr 25/50 | 4 | 575W |
| | Strand Brio 18/30 | 8 | 600W |
| FRESNEL | Strand Quartet | 8 | 650W |
| | Selecon Acclaim | 10 | 650W |
| | Berkley Colourtran | 4 | 2000W |
| | Minuette Fresnels (used for House Lights only) | 4 | 650W |
| PARCAN | Thomas Par 64 | 4 | 1000W (CP62) |
| Intelligent Fixtures | | | |
| BATTEN | LED Head Batten2 | 4 | 18x12W |
| | Varilite Showline SL Bar 520 | 4 | 8,000 lm |
| | Varilite Showline SL Bar 640 | 2 | 13,360 lm |
| PARS | Varilite Showline SL Wash Par 180 | 3 | 3,475 lm |
| OTHER | Varilite Showline SL Band 300 | 2 | 2,000 lm |

| | | | |
|--------------------------|--|----------------------|-----------------------------|
| Operator Position | Tech Gallery | Lighting Desk | ETC Element |
| Dimmers | 72 x 2.5k Permus circuits 6 x 2.5k Strand ACT6 | Non-Dim Power | 4 x Non-Dim 15 amp circuits |

| Default DMX Addresses | | | |
|-----------------------|------------------------------|------------------|-------------------------------|
| 1 - 78 | Dimmers | 211 - 274 | Varilite Showline SL Bar 520 |
| 121 - 123 | Le Maitre Haze Machine | 275 - 306 | Varilite Showline SL Bar 640 |
| 124 - 127 | Martin Atomic Strobe Machine | 307 - 316 | Varilite Showline SL Band 300 |
| 163 - 210 | LED Head Batten2 | 327 - 395 | Varilite Showline SL Wash 180 |

LX GRID PLAN



SOUND

| | | | |
|--------------------------|--|-------------------|---------------------------|
| Operator Position | Tech Gallery | Sound Desk | Soundcraft GB8 (analogue) |
| P.A. | <ul style="list-style-type: none"> • 4 x FOH Speakers (Martin Audio) permanently located in each corner of the studio at Technical Gallery level, fed from Group 1-4 on desk as standard; other options available. • 8 Amp channels available; 4 of which are permanently wired to the 4 FoH speakers. • 2 x Monitor Wedges | | |
| Playback | Windows PC & 2-in 8-out Soundcard with Show Cue System v11 CD Player | | |

Limited additional stock of mics, stands, and cabling available on request.

AUDIO VISUAL

- Retractable projection screen permanently fitted opposite Technical Gallery Covers wall above the alcove, 5m wide
- Front projection from the centre of the Technical Gallery.
- Projectors available for hire on request - arrange with Technical Manager
- Visiting Companies to provide their own playback device for projections.
- A range of video converters are available, but not all types for all scenarios - please discuss your requirements with the Technical Manager in advance.